

**LOWER GROUND FLOOR PLAN**  
**COMMERCIAL DEVELOPMENT AT SECTOR 66, GURUGRAM**

Project Designed by **uha** | Architect **ARCOP**

Disclaimer: All designs, specifications, elevations are illustrative and subject to change without notice by the Company or on account of Government norms. All images and graphical depictions are purely artistic in nature and may not represent the actual final view. The said Commercial Colony is a part of License No. 97 of 2010 dated 18.11.2010 and License No. 41 of 2011 dated 03.05.2011 at Sector 66, Gurugram is being developed by Elan City LLP. Building Plans Approval vide Memo No.2005 dated: 15.04.2021. RERA approved by HARERA, Gurugram vide Registration No.RC/REP/HARERA/GGM/469/201/2021/37 dated 27.07.2021 (HARERA Website: <https://haryana.rera.gov.in>). Copies of approval are available for viewing at the Developer's Corporate Office/Site Office at Gurugram. 1 sq.mtr = 1.196 sq.yds and 1 sq.mtr = 10.764 sq.ft.



ELAN  
**EMPIRE™**  
RISE WITH IT

**GROUND FLOOR PLAN**  
**COMMERCIAL DEVELOPMENT AT SECTOR 66, GURUGRAM**

Project Designed by **uha** | Architect **ARCOP**

Disclaimer: All designs, specifications, elevations are illustrative and subject to change without notice by the Company or on account of Government norms. All images and graphical depictions are purely artistic in nature and may not represent the actual final view. The said Commercial Colony is a part of License No. 97 of 2010 dated 18.11.2010 and License No. 41 of 2011 dated 03.05.2011 at Sector 66, Gurugram is being developed by Elan City LLP. Building Plans Approval vide Memo No.2005 dated: 15.04.2021. RERA approved by HARERA, Gurugram vide Registration No.RC/REP/HARERA/GGM/469/201/2021/37 dated 27.07.2021 (HARERA Website: <https://haryana.rera.gov.in>). Copies of approval are available for viewing at the Developer's Corporate Office/Site Office at Gurugram. 1 sq.mtr = 1.196 sq.yds and 1 sq.mtr = 10.764 sq.ft.



ELAN  
**EMPIRE™**  
RISE WITH IT

FIRST FLOOR PLAN  
COMMERCIAL DEVELOPMENT AT SECTOR 66, GURUGRAM

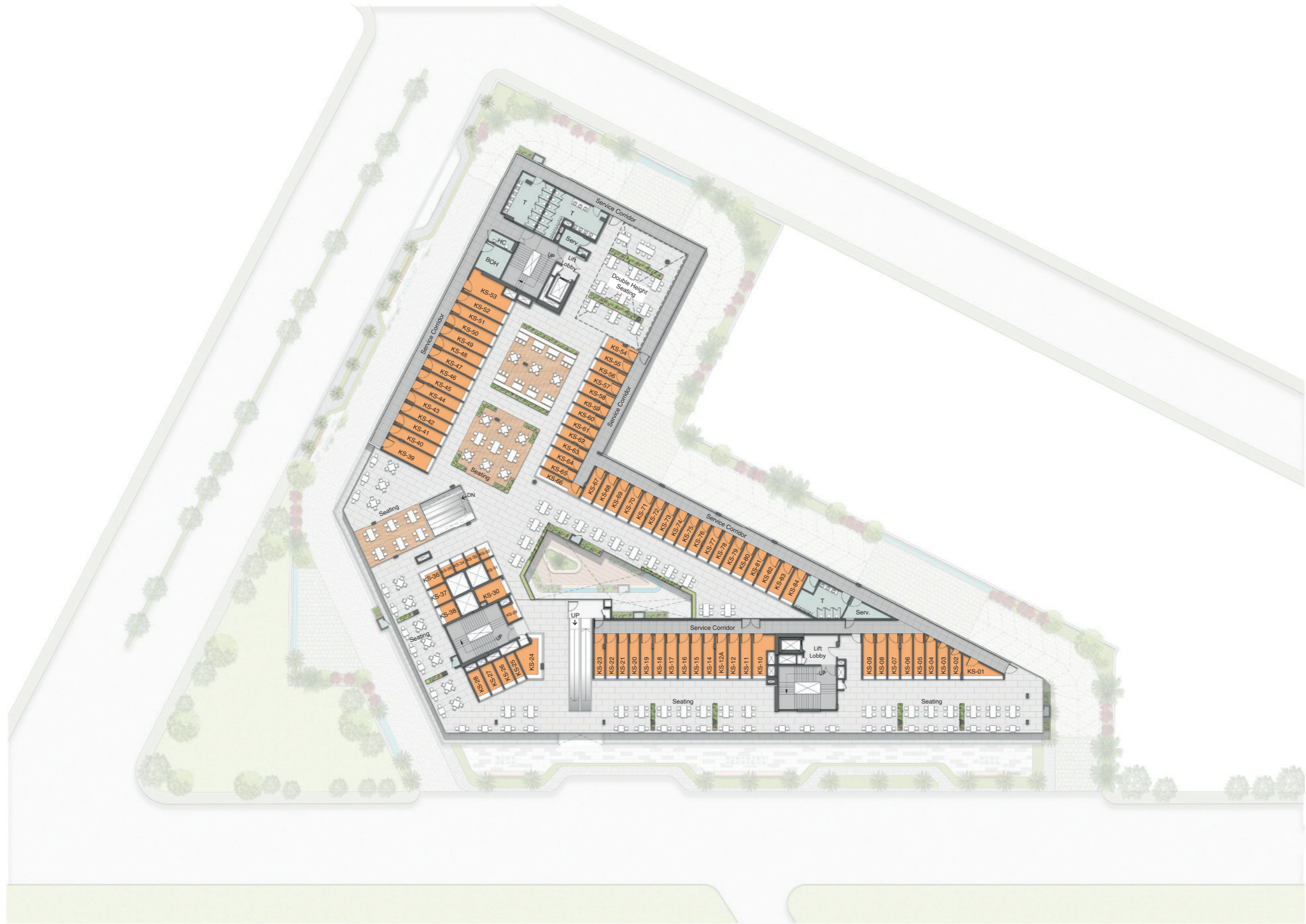
Project Designed by **uha** | Architect **ARCOP**



ELAN  
EMPIRE™  
RISE WITH IT

SECOND FLOOR PLAN  
COMMERCIAL DEVELOPMENT AT SECTOR 66, GURUGRAM

Project Designed by **uha** | Architect **ARCOP**

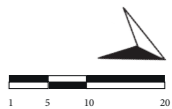


ELAN  
**EMPIRE™**  
RISE WITH IT

THIRD FLOOR PLAN  
**COMMERCIAL DEVELOPMENT AT SECTOR 66, GURUGRAM**

Project Designed by **uha** | Architect **ARCOP**

Disclaimer: All designs, specifications, elevations are illustrative and subject to change without notice by the Company or on account of Government norms. All images and graphical depictions are purely artistic in nature and may not represent the actual final view. The said Commercial Colony is a part of License No. 97 of 2010 dated 18.11.2010 and License No. 41 of 2011 dated 03.05.2011 at Sector 66, Gurugram is being developed by Elan City LLP. Building Plans Approval vide Memo No.2005 dated: 15.04.2021. RERA approved by HARERA, Gurugram vide Registration No.RC/REP/HARERA/GGM/469/201/2021/37 dated 27.07.2021 (HARERA Website: <https://haryanarera.gov.in>). Copies of approval are available for viewing at the Developer's Corporate Office/Site Office at Gurugram. 1 sq.mtr = 1.196 sq.yds and 1 sq.mtr = 10.764 sq.ft.



ELAN  
**EMPIRE™**  
RISE WITH IT

FOURTH FLOOR PLAN  
**COMMERCIAL DEVELOPMENT AT SECTOR 66, GURUGRAM**

Project Designed by **uha** | Architect **ARCOP**



ELAN  
**EMPIRE™**  
RISE WITH IT

FIFTH FLOOR PLAN  
**COMMERCIAL DEVELOPMENT AT SECTOR 66, GURUGRAM**

Project Designed by **uha** | Architect **ARCOP**



ELAN  
**EMPIRE™**  
RISE WITH IT

SIXTH FLOOR PLAN  
**COMMERCIAL DEVELOPMENT AT SECTOR 66, GURUGRAM**

Project Designed by **uha** | Architect **ARCOP**





ELAN  
**EMPIRE™**  
RISE WITH IT

SEVENTH FLOOR PLAN  
**COMMERCIAL DEVELOPMENT AT SECTOR 66, GURUGRAM**

Project Designed by **uha** | Architect **ARCOP**



ELAN  
**EMPIRE™**  
 RISE WITH IT

**EIGHTH FLOOR PLAN**  
**COMMERCIAL DEVELOPMENT AT SECTOR 66, GURUGRAM**

Project Designed by **uha** | Architect **ARCOP**



ELAN  
**EMPIRE™**  
 RISE WITH IT

NINTH FLOOR PLAN  
**COMMERCIAL DEVELOPMENT AT SECTOR 66, GURUGRAM**

Project Designed by **uha** | Architect **ARCOP**

Disclaimer: All designs, specifications, elevations are illustrative and subject to change without notice by the Company or on account of Government norms. All images and graphical depictions are purely artistic in nature and may not represent the actual final view. The said Commercial Colony is a part of License No. 97 of 2010 dated 18.11.2010 and License No. 41 of 2011 dated 03.05.2011 at Sector 66, Gurugram is being developed by Elan City LLP. Building Plans Approval vide Memo No.2005 dated: 15.04.2021. RERA approved by HARERA, Gurugram vide Registration No.RC/REP/HARERA/GGM/469/201/2021/37 dated 27.07.2021 (HARERA Website: <https://haryana.rera.gov.in>). Copies of approval are available for viewing at the Developer's Corporate Office/Site Office at Gurugram. 1 sq.mtr = 1.196 sq.yds and 1 sq.mtr = 10.764 sq.ft.